

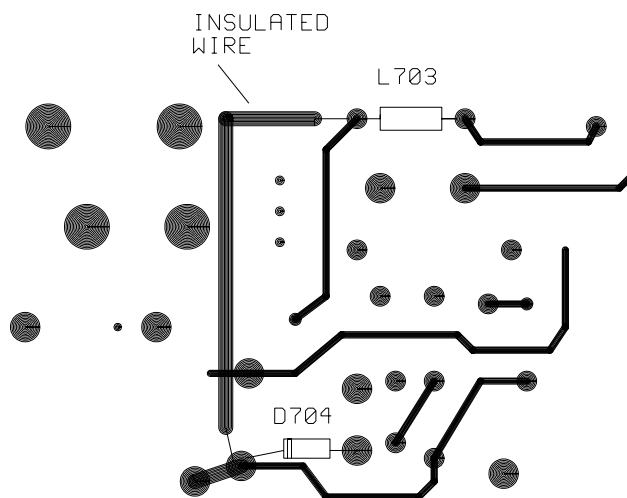
TELEVISION TECHNICAL BULLETIN

<u>MODELS</u>	51CS03H	59CS03H	66CS03H
	66CS05H	51CS05H	59CS05H

SYMPTOM The set remains in the standby mode.

CAUSE Crack on the PWB due to transport damage.

ACTION If there is no 300VDC across C708, then check the continuity between L703 and the cathode of D704. If this is open circuit, fit a wire link between the two points as indicated in the diagram below.



Location of wire link on the component side of the PWB